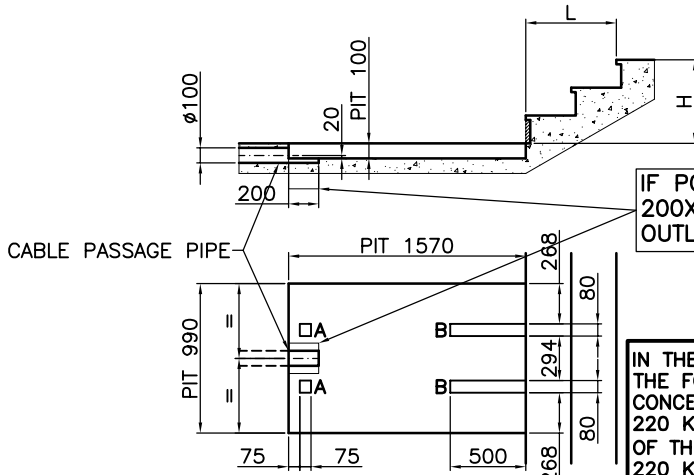


IN THE CASE OF SYSTEM PREPARED FOR FLOORING THE PIT DEPTH MUST BE INCREASED BY 30 MM AMOUNTING TO THE FORESEEN AND MAXIMUM THICKNESS OF THE COVERING.

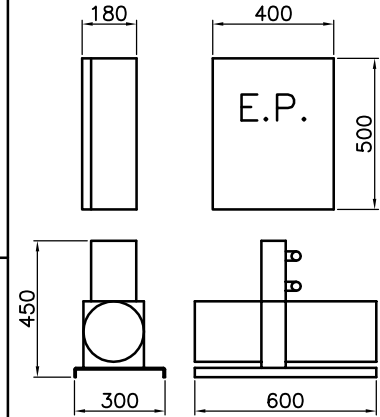


IF POSSIBLE PLACE A 200X200X200 WELL AT THE OUTLET OF PIPES AND CABLES

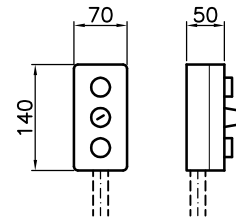
IN THE PIT ARE APPLIED THE FOLLOWING CONCENTRATED LOADS:  
 220 KG APPLIED IN EACH OF THE POINT "A"  
 220 KG APPLIED IN EACH OF THE AREAS "B" MOVED DURING OPERATION

| MODEL        | CAPACITY | H        | L         |
|--------------|----------|----------|-----------|
| Z-SLIM       | 300 Kg   | MAX. 500 | MAX. 1000 |
| Z-SLIM SUPER | 300 Kg   | MAX. 750 | MAX. 1000 |

CONTROL UNIT AND PANEL DIMENSION (SCALE 1/25)



LANDING BUTTON STRIP (SCALE 1/10)



THE BUTTON STRIPS MUST BE PLACED NEAR THE MACHINE AT A HEIGHT OF APPROX. 1000 mm. THE BUTTON STRIPS MUST BE EMBEDDED BY 30 mm

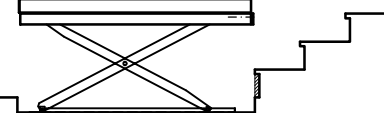
MACHINE CLOSED AT REST



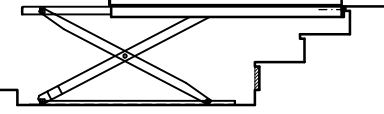
STEP 1 THE PERIMETRAL PROTECTIONS RISE



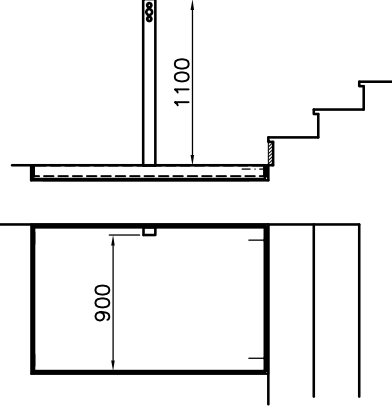
STEP 2 THE MACHINE RISES



STEP 3 THE UPPER PLATFORM TRANSFERS



BUTTON STRIP ON BOARD (ON REQUEST)



380V THREE-PHASE - 220V MONOPHASE POWER SUPPLY  
 MOTOR 1.1 KW  
 24 V DC LANDING BUTTON STRIP  
 POWER ON BOARD 24 VDC

THE PIT MUST BE MADE OF REINFORCED CONCRETE. IT MUST HAVE THE EXACT DIMENSIONS GIVEN IN THE DRAWING AND WITH THE HOLES FOR PASSING THE CABLES. THE BOTTOM MUST BE PERFECTLY FLAT AND LEVEL AND THE WALLS PERFECTLY PLUMB AND SQUARED.  
 PLACE A Ø100 mm HOSE FOR ELECTRIC SYSTEMS, POSITIONED EXACTLY AS ON THE DRAWING, FROM THE PIT TO THE PLACE OF INSTALLATION OF THE CONTROL UNIT AND MACHINE CONTROL PANEL FOR PASSING PIPES AND CONNECTION CABLES. ALSO PREPARE TWO 20 mm DIA. SHEATHS FROM THE PLACE OF INSTALLATION OF THE CONTROL PANEL TO THE TWO LANDING BUTTON STRIPS. IF THE SYSTEM IS INSTALLED OUTDOORS, ALSO PROVIDE A DRAIN ON THE BOTTOM OF THE PIT FOR ANY RAIN WATER.



|             |   |       |      |            |          |      |   |
|-------------|---|-------|------|------------|----------|------|---|
| Disegnatore | Lavezzini F.                                    | Scala | 1/50 | Disegno N° | SCH-021  | Mod. | A |
| Data        | 27-02-07  |       |      | Nome file  | SCH021-0 |      |   |
| Descrizione | TRANSFER-LIFT TECHNICAL SHEET<br>MODEL "Z-SLIM" |       |      |            |          |      |   |

This drawing is the exclusive property of ECALIFTS and may not be copied or divulged to others without our permission (current copyright laws)